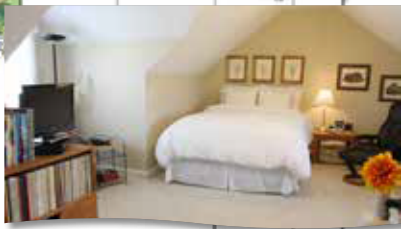
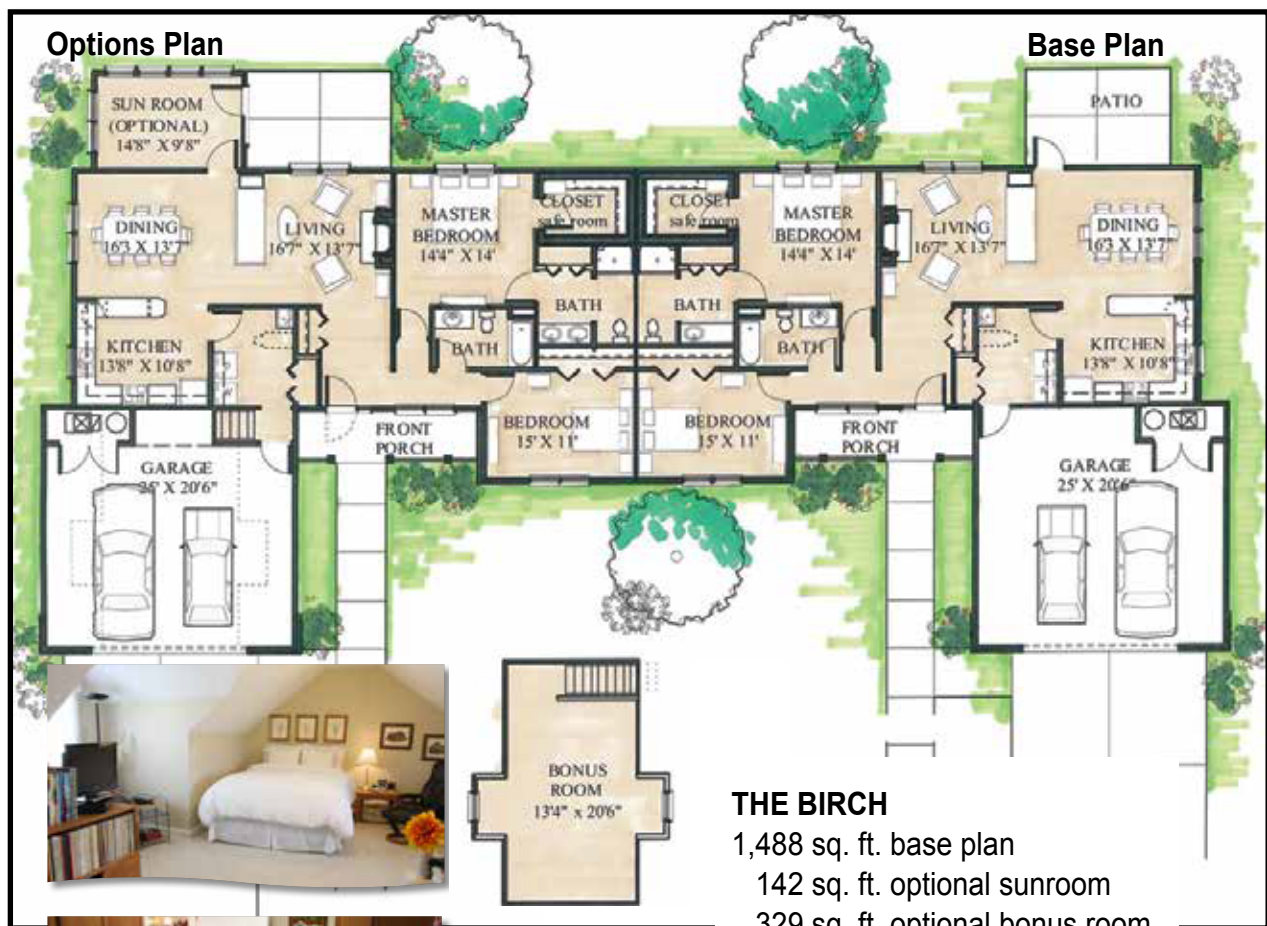


# The Birch



Open living-dining room for expanding a dining table for guests and family gatherings. The kitchen and dining room are divided by a counter or there's an option to add upper cabinets. The utility room is conveniently located off of the kitchen, as well as the double garage. The master bedroom walk-in closet serves as the storm shelter. Sunroom and bonus room options available.



## THE BIRCH

1,488 sq. ft. base plan

142 sq. ft. optional sunroom

329 sq. ft. optional bonus room

**1,959 sq. ft. total**